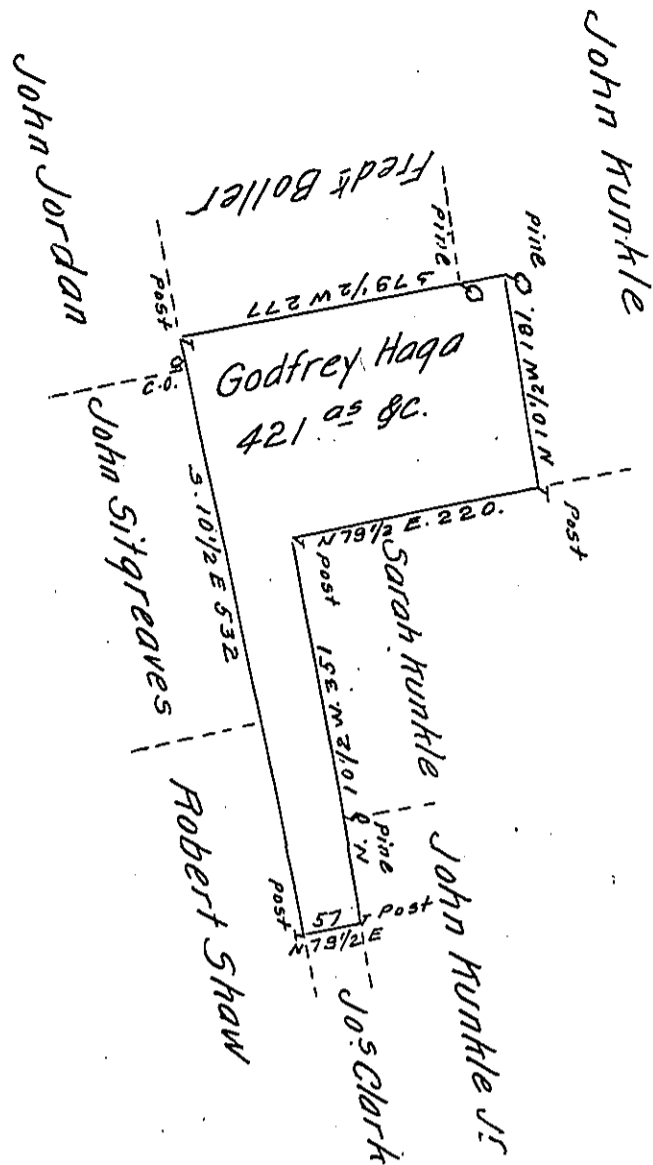


Hazle
Luzerne



Adraught of a tract of land called - Situate Joining Land Surveyed
 - John Jordan, and others in the County of Northumd or Northamp^{sh}
 - four Hundred and twenty one acres and allowance. Surveyed
 for Godfrey Haga the 19th day of October 1793. by Virtue of a Warrant
 dated the 10th day of July 1793.

by W^m Gray D. S.

Daniel Brodhead Esq^r }
 Surv^r Gen!

IN TESTIMONY that the above is a copy of the original remaining on file in
 the Department of Internal Affairs of Pennsylvania, made
 conformably to an Act of Assembly approved the 16th day of
 February, 1833, I have hereunto set my Hand and caused
 the Seal of said Department to be affixed at Harrisburg,
 this twenty first day of March 1911.

Henry Horck
 Secretary of Internal Affairs.